

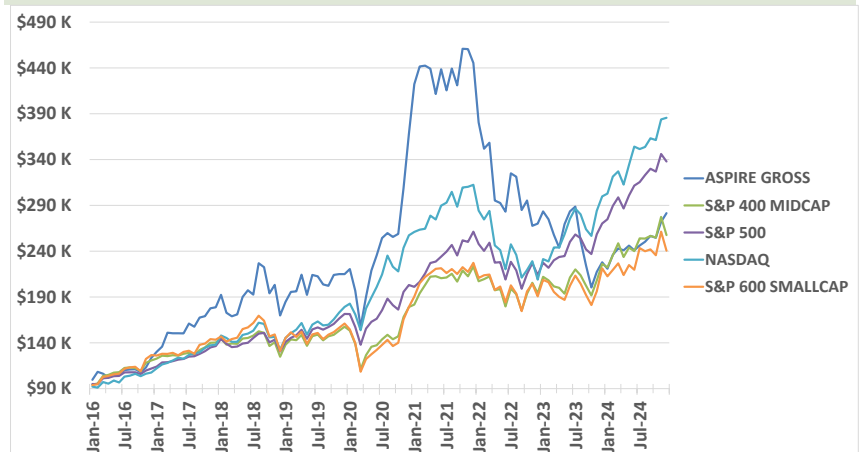
INVESTMENT MANAGEMENT PHILOSOPHY

The TFCM Aspire Strategy adheres to the same disciplined process that is applied to our flagship Core Growth Strategy and our narrative-based approach, which has been deployed by the principals of Taylor Frigon for almost three decades. Over that period of time, an integral part of our investment strategy has been to invest in companies that possess unique characteristics of solid core growth companies, primarily in the areas of core technology, healthcare and biotechnology. The TFCM Aspire strategy portfolio is a derivative of the TFCM Core Growth Strategy and is made up of what the Investment Committee determines to be the companies with the highest growth potential, and are generally smaller in size. As such, the TFCM Aspire Strategy is a highly concentrated portfolio and will generally consist of ten to twenty companies, therefore, it is a highly aggressive strategy.

TFCM ASPIRE SMALL-CAP STRATEGY

We have been heavily researching and investing in high growth companies in core technology, healthcare and biotechnology for decades at TFCM. Our experience in our venture capital partnership, Taylor Frigon Capital Partners LP, uniquely exposes us to some of the most exciting aspects of these markets and provides us the insight and knowledge necessary to navigate the complex concepts that exist in the most innovative and rapidly changing industries of today. The most significant narratives for the future are happening in Biosciences and core technology and the TFCM Aspire Strategy is well-positioned for the investor that desires exposure to these significant growth opportunities.

PERFORMANCE/GROWTH OF \$100,000 SINCE INCEPTION 12/31/2015²



	Total Return		Annualized TR				Cumulative
	QTD	YTD	1 YEAR	3 YEAR	5 YEAR	since inception ¹	since inception ¹
TFCM Net	9.25%	21.66%	21.66%	-15.34%	4.05%	10.55%	146.91%
TFCM Gross	9.66%	23.49%	23.49%	-14.17%	5.54%	12.18%	181.53%
NASDAQ	6.17%	28.64%	28.64%	7.26%	19.59%	16.16%	285.64%
S&P 500	2.41%	25.02%	25.02%	8.93%	14.51%	14.47%	237.86%
S&P 400 Midcap	0.35%	13.93%	13.93%	4.87%	10.33%	11.08%	157.60%
S&P 600 SmallCap	-0.58%	8.70%	8.70%	1.91%	8.35%	10.23%	140.53%

¹ Inception date 12/31/2015

Taylor Frigon Capital Management LLC claims compliance with the Global Investment Performance Standards (GIPS®) and is verified by Ashland Partners LP from 01/19/2007 to 12/31/2015, and by ACA Group, Performance Services Division for 01/01/2016 to 12/31/2023. © Taylor Frigon Capital Management, LLC is a privately owned, SEC-Registered Investment Advisory firm.

Please remember that past performance may not be indicative of future results. Different types of investments involve varying degrees of risk, and there can be no assurance that the future performance of any specific investment, investment strategy, or product made reference to directly or indirectly in this newsletter (article), will be profitable, equal any corresponding indicated historical performance level(s), or be suitable for your portfolio. Due to various factors, including changing market conditions, the content may no longer be reflective of current opinions or positions. Moreover, you should not assume that any discussion or information contained in this newsletter (article) serves as the receipt of, or as a substitute for, personalized investment advice from Taylor Frigon Capital Management LLC. To the extent that a reader has any questions regarding the applicability of any specific issue discussed above to his/her individual situation, he/she is encouraged to consult with the professional advisor of his/her choosing. A copy of our current written disclosure statement discussing our advisory services and fees is available for review upon request.



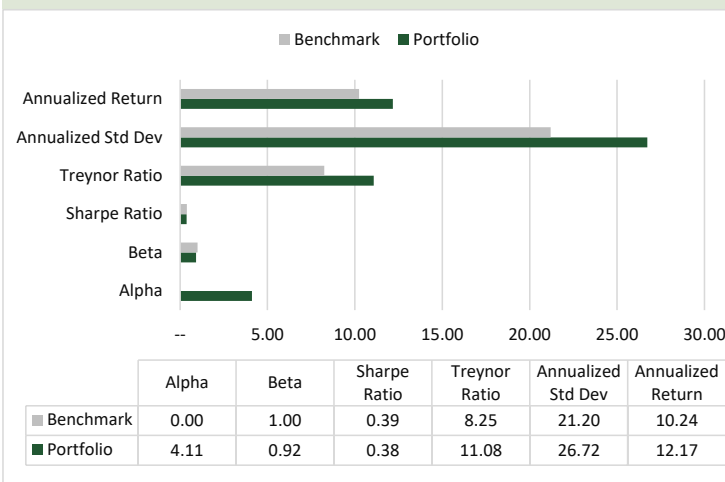
TOP 5 POSITIONS ³

	Weight (%)	Mkt Cap (\$Mil)
Impinj, Inc.	11.20	424
Boot Barn Holdings, Inc.	9.21	171
ClearPoint Neuro, Inc.	8.14	8267
Glaukos Corp	7.54	4634
NAPCO Security Technologies, Inc.	7.29	1836

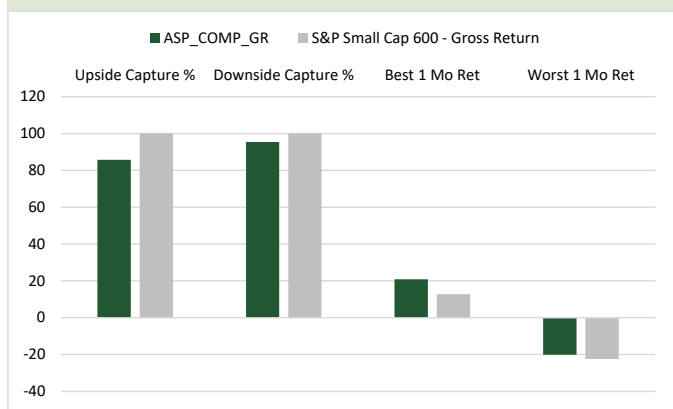
SECTOR WEIGHTINGS (%) ³

	Portfolio	BM
Technology	31.33	12.02
Healthcare	30.87	9.47
Finance	9.47	25.41
Industrials	8.03	16.18
Consumer Cyclical	7.54	10.92
Cash	6.45	0.00

MODERN PORTFOLIO STATISTICS^{4*}



RISK/RETURN CHARACTERISTICS⁴



CHARACTERISTICS³

	Portfolio	BM
# of Securities	17	603
Weighted Ave Mkt Cap	2,877	3,604
Weighted Med Mkt Cap	1,836	3,022
Price/Sales	10.4	5.6
Hist 3Yr Sales Growth	35.1	13.3
Hist 3Yr EPS Growth	39.0	31.1
Est 3-5 Yr EPS Growth	20.8	12.8
LT Debt/Capital	28.3	33.3
Ave Portfolio Turnover 2023	34.1	33.3

Gerry Frigon
Chief Investment Officer
gfrigon@taylorfrigon.com

Taylor Frigon Capital Management, LLC
18835 N Thompson Peak Pkwy C-200
Scottsdale, AZ 85255
(805) 226-0280

³ Source: FactSet PA; Benchmark SPDR S&P 600 Small Cap ETF. These statistics are based on a composite of actual portfolios.

⁴ Source: FactSet SPAR; Benchmark: S&P Small Cap 600 - Gross Return. These statistics are based on GIPS compliant gross-of-fees monthly composite returns.

Definitions: **Std Dev:** A statistical measure of the degree to which an individual portfolio return tends to vary from the mean, based on the entire population. The greater degree of dispersion, the greater degree of risk. **Treynor Ratio:** Measures reward per unit of beta risk. The numerator of this ratio is the difference between the portfolio annualized return and the annualized return of the risk free instrument (T-Bills). The denominator is the portfolio's beta. **Sharpe Ratio:** A risk-adjusted measure that measures reward per unit of risk. The higher the Sharpe Ratio, the better. The numerator is the difference between the portfolio's annualized return and the annualized return of a risk-free instrument. The denominator is the portfolio's annualized standard deviation (population). **Beta:** The systematic risk of a portfolio. The beta of a portfolio is its sensitivity to a benchmark. A portfolio with a beta of 1 is as risky as the benchmark and would therefore provide expected returns equal to those of the market during both up and down periods. A portfolio with a beta of 2 would move approximately twice as much as the benchmark. **Alpha:** The standard intercept. Alpha is a risk (beta-adjusted) return measurement. If two managers had the same return, but one had a lower beta, that manager would have a higher alpha.



GIPS COMPOSITE REPORT

GIPS® compliance indicates that a firm adheres to the overall guiding principles of the GIPS® standards: fair representation and full disclosure of a firm's investment performance. Participation in GIPS® is voluntary and regulators do not require investment management firms to follow it, signifying that those firms who undergo this process are truly committed to reporting and performance excellence.

Year End	Total Firm Assets (millions)	Composite Assets		ANNUAL PERFORMANCE RESULTS									TCFM Aspire Composite			Composite Dispersion Gross
		USD (millions)	# of Accts	NASDAQ	NASDAQ		S&P 500		S&P 400		S&P 600		Gross	3 yr Gross Std Dev	Net	
					3 Yr Std Dev	S&P 500	3 Yr Std Dev	S&P 400	3 Yr Std Dev	S&P600	3 Yr Std Dev					
2024	\$224.402	\$3.084	24	28.64%	21.36%	25.02%	17.15%	13.93%	20.76%	8.70%	22.90%	23.49%	25.10%	21.66%	1.69%	
2023	\$224.955	\$3.010	28	43.42%	21.21%	26.29%	17.29%	16.45%	19.75%	16.05%	20.97%	-15.59%	27.32%	-16.54%	1.39%	
2022	\$206.423	\$3.998	28	-33.10%	23.88%	-18.11%	20.87%	-13.06%	24.51%	-16.10%	26.07%	-39.37%	34.44%	-40.27%	1.74%	
2021	\$363.183	\$6.824	29	21.39%	18.70%	28.71%	17.17%	24.77%	21.83%	26.82%	23.57%	21.00%	30.02%	19.20%	1.22%	
2020	\$337.373	\$5.798	29	43.64%	20.77%	18.40%	18.53%	13.64%	23.31%	11.29%	25.50%	71.28%	33.72%	68.73%	3.11%	
2019	\$183.542	\$3.659	34	35.23%	14.32%	31.49%	11.93%	26.21%	14.46%	22.78%	16.24%	26.60%	24.18%	24.71%	2.77%	
2018	\$141.460	\$2.918	37	-3.88%	13.57%	-4.38%	10.80%	-11.08%	13.31%	-8.48%	16.02%	-5.01%	22.58%	-6.43%	1.18%	
2017	\$153.814	\$2.563	32	28.24%	NA	21.83%	NA	16.82%	NA	13.23%	NA	44.73%	NA	42.57%	3.52%	
2016	\$128.752	\$1.128	31	7.50%	NA	11.96%	NA	17.60%	NA	26.56%	NA	23.50%	NA	21.66%	3.89%	

NA - Information is not presented due to an insufficient number of portfolios in the composite period. In addition, the three-year annualized ex-post standard deviation of

Aspire Composite contains fully discretionary Aspire Strategy accounts which invest primarily in 10-20 growth stocks in the areas of core technology, health care and bio-technology, with small components of cash, and for comparison purposes is measured against the NASDAQ, S&P 500, S&P 400 Midcap indices and S&P 600 SmallCap indices. The S&P 400 Midcap Total Return is an unmanaged index consisting of 400 domestic stocks. To be included in the index, a stock must have a total market capitalization that ranges from \$1.4 billion to \$5.9 billion at the time of addition to the index. S&P 600 SmallCap Total Return is an unmanaged index consisting of 600 domestic stocks chosen for market size, liquidity and industry group representation. The index has dividends reinvested in its value. It is a market-value weighted index with approximately \$8 billion indexed to it.

The Aspire Composite was created on 12/31/2015.

Taylor Frigon Capital Management, LLC (TFCM) claims compliance with the Global Investment Performance Standards (GIPS®) and has prepared and presented this report in compliance with the GIPS standards. TFCM has been independently verified for the periods 01/19/2007 through 12/31/2015 by Ashland Partners LP, and for 01/01/2016 to 12/31/2023 by ACA Group, Performance Services Division. A firm that claims compliance with the GIPS standards must establish policies and procedures for complying with all the applicable requirements of the GIPS standards. Verification provides assurance on whether the firm's policies and procedures related to composite and pooled fund maintenance, as well as the calculation, presentation, and distribution of performance, have been designed in compliance with the GIPS standards and have been implemented on a firm-wide basis.

TFCM defines itself for GIPS purposes as an independent registered investment adviser with the Securities and Exchange Commission. For purposes of applying the GIPS standards, TFCM GIPS-defined firm does not include private equity investments. The firm's list of composite descriptions is available upon request. Results are based on fully discretionary accounts under management, including those accounts no longer with the firm and past performance is not indicative of future results. GIPS® is a registered trademark of CFA Institute. CFA Institute does not endorse or promote this organization, nor does it warrant the accuracy or quality of the content contained herein.

The U.S. Dollar is the currency used to express performance. Returns are presented gross and net of management fees and include the reinvestment of all income. The annual composite dispersion presented is an asset-weighted standard deviation calculated for the accounts in the composite the entire year. Policies for valuing investments, calculating performance, and preparing GIPS Reports are available upon request. The investment management fee schedule for the composite prior to 2017 was 1.25% on the first \$5 million and 1.00% after \$5 million, with a minimum of \$15,000.00 annually. As of January 2017, management fee schedule is 1% with a minimum \$50,000 annually. Actual investment advisory fees incurred by clients may vary.